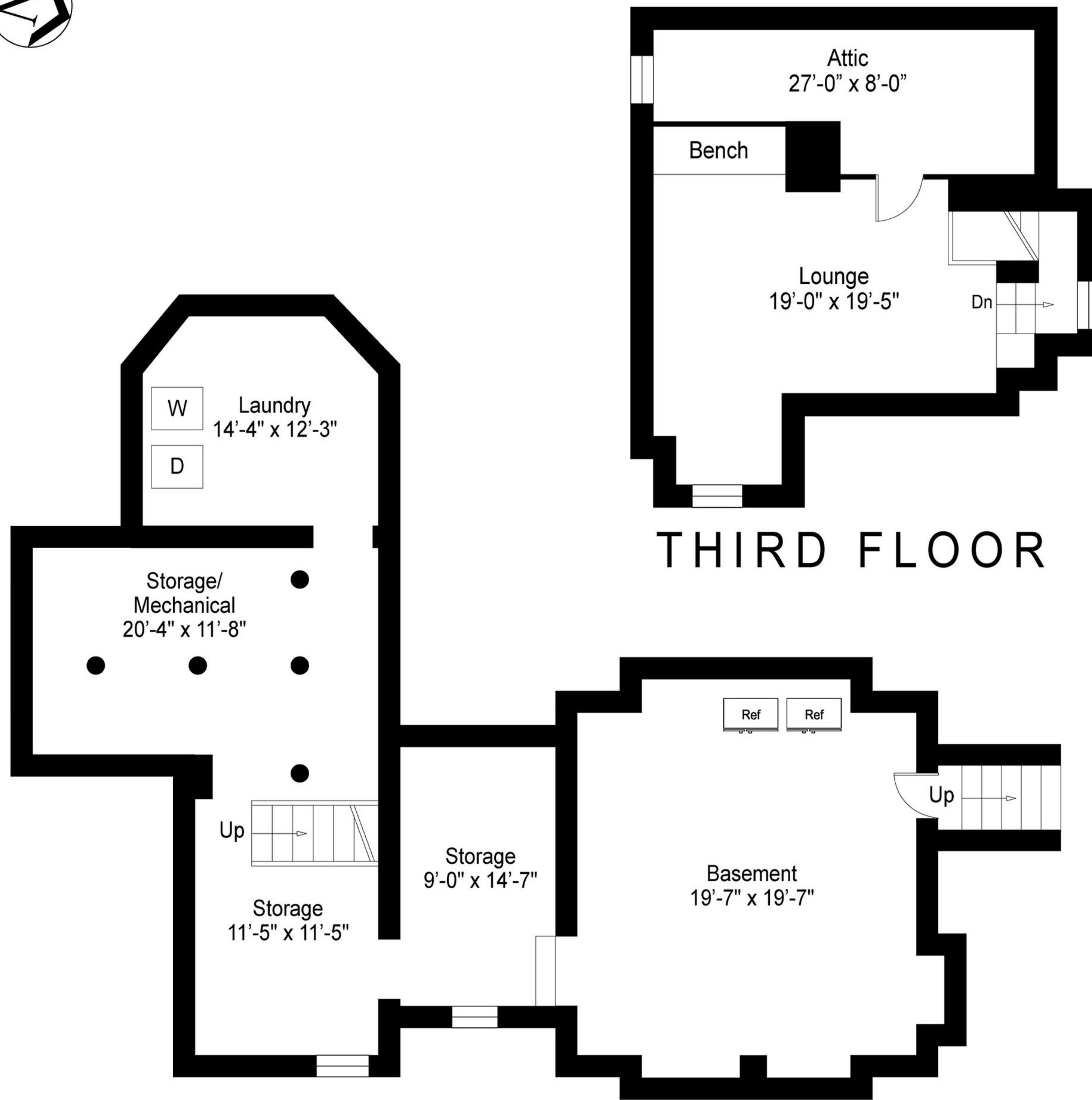


# FIRST FLOOR

First Floor	1975 Sq.Ft.
Second Floor	1185 Sq.Ft.
Third Floor	310 Sq.Ft.
Basement	1120 Sq.Ft.
Cottage	770 Sq.Ft.
Garage	370 Sq.Ft.
Decking	750 Sq.Ft.

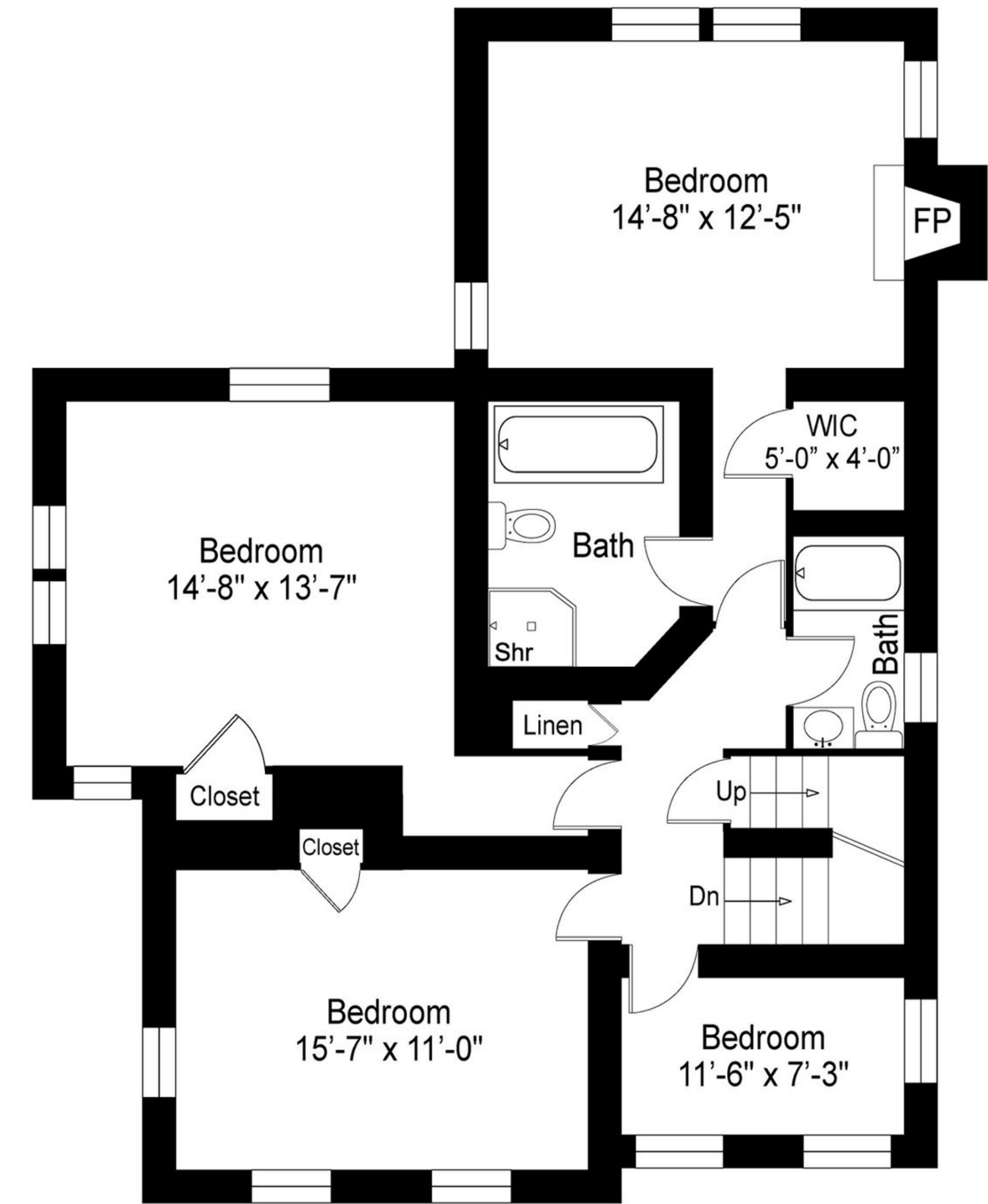
Floor plan, furniture, and fixture measurements and dimensions are approximate and are for illustrative purposes only. The representative gives no guarantee, warranty or representation as to the accuracy and completeness of the floor plan.

72 Lumber Lane, Bridgehampton, NY 11932



THIRD FLOOR

BASEMENT



SECOND FLOOR

First Floor	1975 Sq.Ft.
Second Floor	1185 Sq.Ft.
Third Floor	310 Sq.Ft.
Basement	1120 Sq.Ft.
Cottage	770 Sq.Ft.
Garage	370 Sq.Ft.
Decking	750 Sq.Ft.

Floor plan, furniture, and fixture measurements and dimensions are approximate and are for illustrative purposes only. The representative gives no guarantee, warranty or representation as to the accuracy and completeness of the floor plan.